

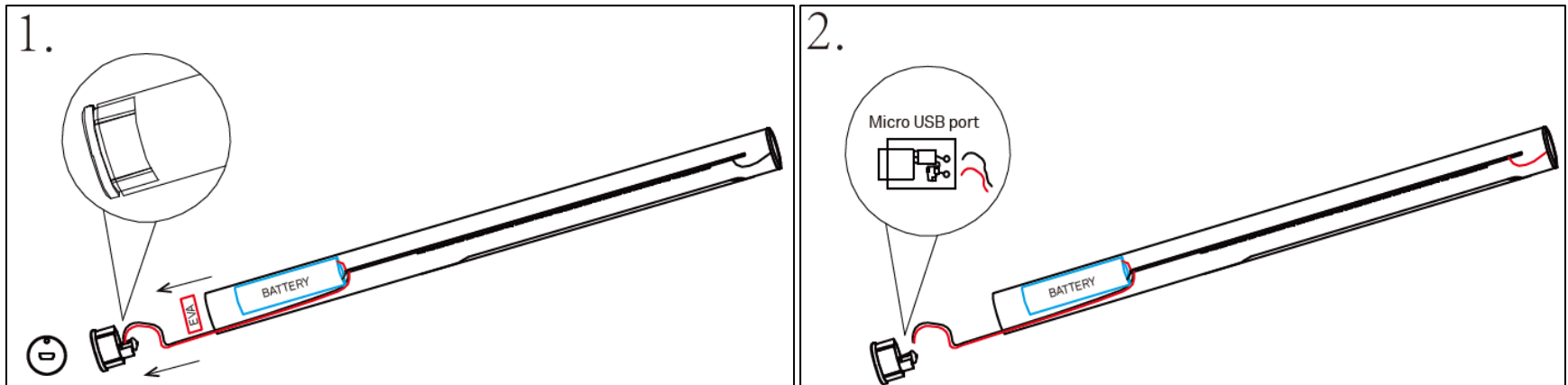
Disposal & Dismantling

Article number: 4305713
Light source model: LT2361_module

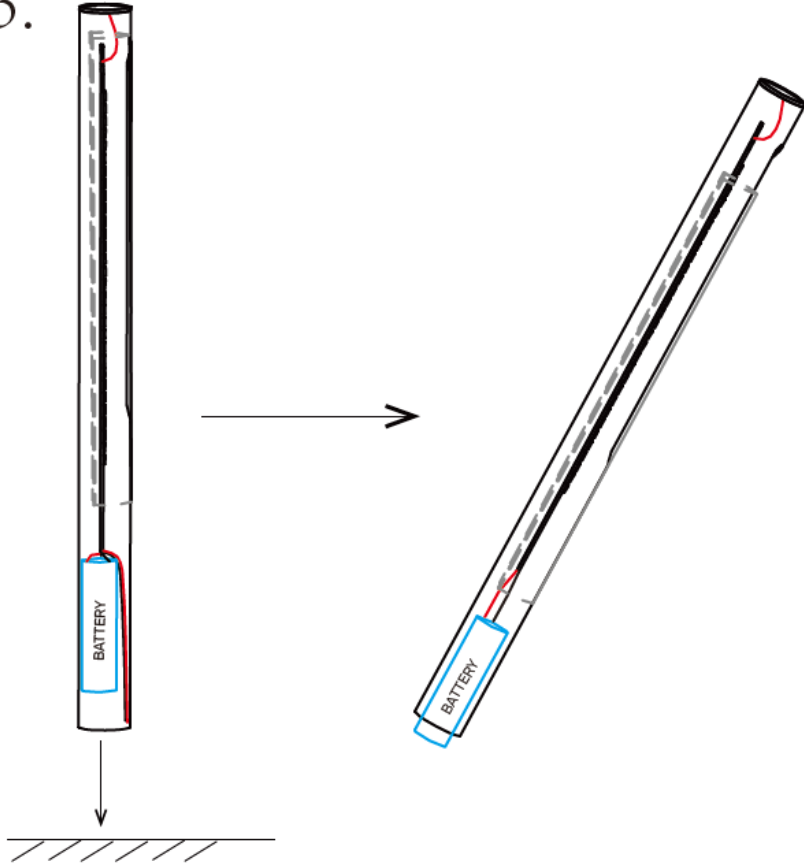
Dismantling of light source for disposal purposes

Firstly, disconnect the product from any power supply by disconnecting the USB cable. Secure it against unauthorized switching on.

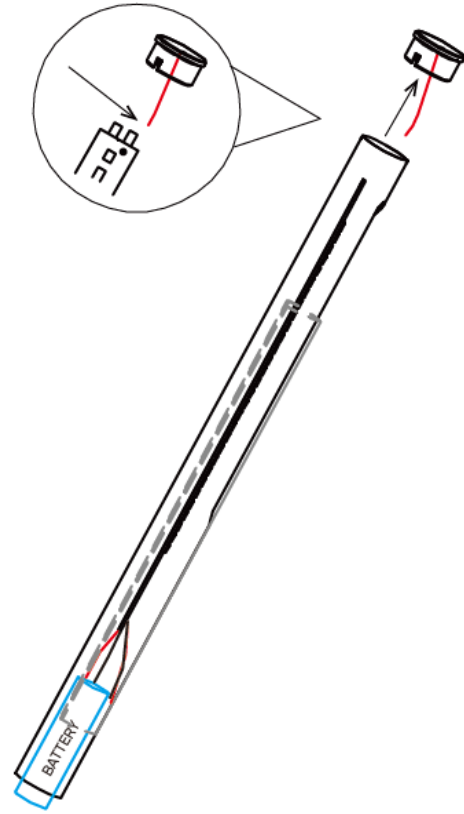
1. Use a flat tool, e. g. a screwdriver, to pry the cover that includes the USB connection open and remove the cover from the product.
2. Detach the wires from the USB port.
3. Pound the product to make the battery come out of the housing.
4. Use a flat tool, e. g. a screwdriver, to pry the cap on the other side of the housing open, cut the wire, and remove the cap from the product.
5. Remove the battery, cover, tube, PCB from the housing.
6. Cut the wires between battery and PCB. The light source can now be disposed of individually according to the relevant legal regulations.

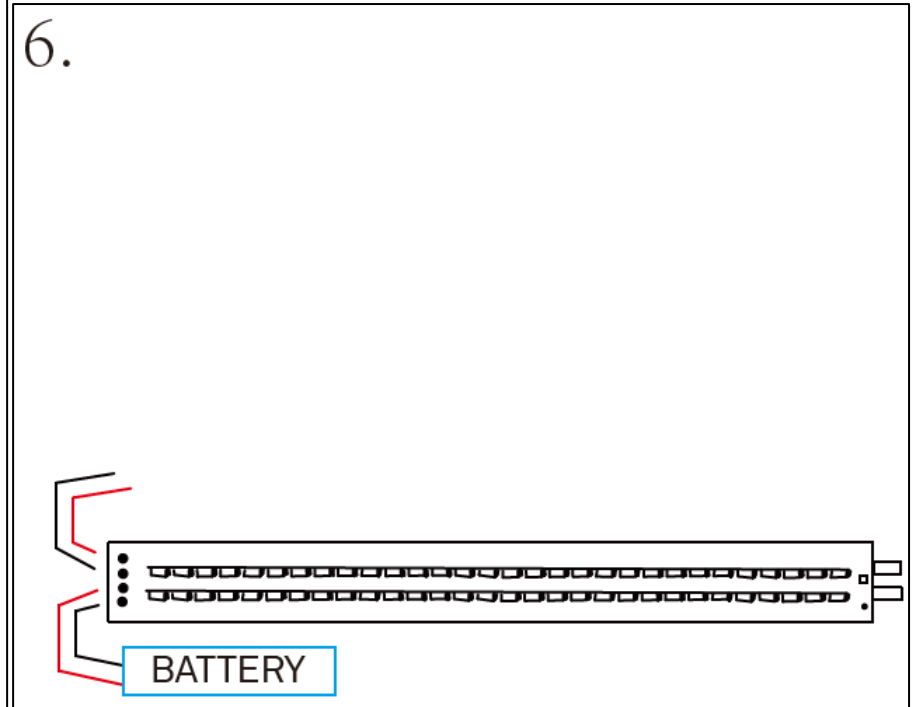
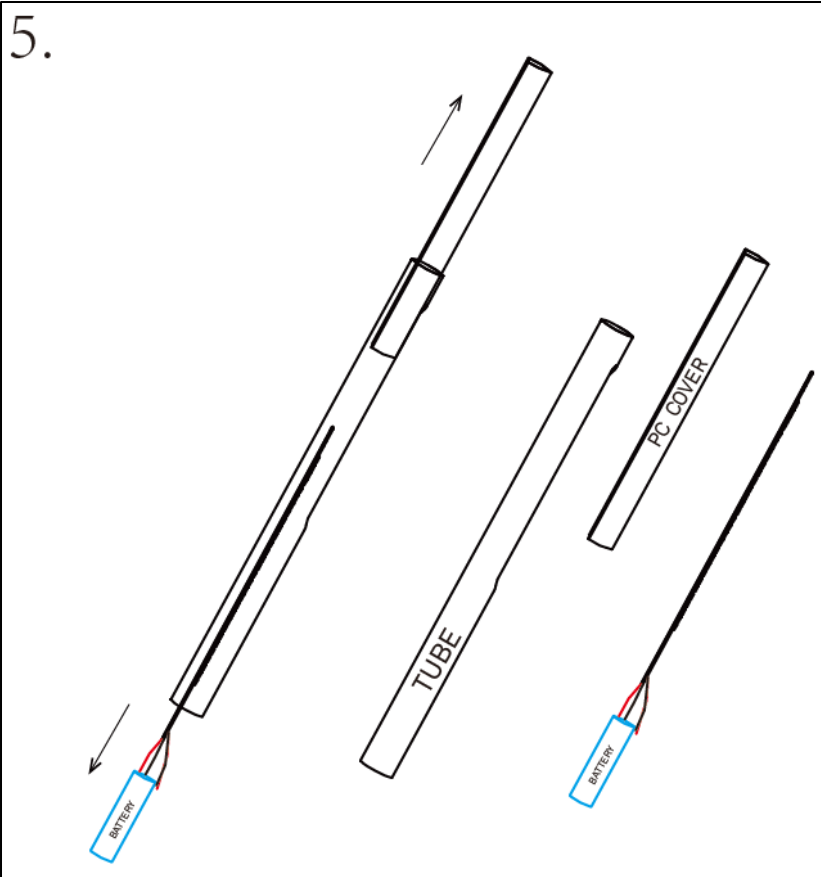


3.



4.





Manufacturer

DI-KA Vertriebsgesellschaft mbH & Co. KG
 Oberstrasse 4, 59755 Arnsberg
 Germany
 Tel: +49 2932 9022580
<http://www.di-ka.net/>